



Title Plan - LT 496148

Survey Number LT 496148
Surveyor Reference E18447 KSP 8A
Surveyor Christopher David Hawes
Survey Firm Davie Lovell-Smith Ltd
Surveyor Declaration

Survey Details

Dataset Description Lots 800-830, 857-863, 867-872, 875-883, 887-892, 992, 993, 1001, 1004, 1050 and 1051 being subdivision of Lot 1009 DP 488630

Status Initiated

Land District Canterbury **Survey Class** Class A

Submitted Date **Survey Approval Date**
Deposit Date

Territorial Authorities

Christchurch City

Comprised In

CT 701323

Created Parcels

Parcels	Parcel Intent	Area	CT Reference
Lot 800 Deposited Plan 496148	Fee Simple Title	0.0388 Ha	729409
Lot 801 Deposited Plan 496148	Fee Simple Title	0.0388 Ha	729410
Lot 802 Deposited Plan 496148	Fee Simple Title	0.0386 Ha	729411
Lot 803 Deposited Plan 496148	Fee Simple Title	0.0330 Ha	729412
Lot 804 Deposited Plan 496148	Fee Simple Title	0.0386 Ha	729413
Lot 805 Deposited Plan 496148	Fee Simple Title	0.0517 Ha	729414
Lot 806 Deposited Plan 496148	Fee Simple Title	0.0532 Ha	729415
Lot 807 Deposited Plan 496148	Fee Simple Title	0.0400 Ha	729416
Lot 808 Deposited Plan 496148	Fee Simple Title	0.0418 Ha	729417
Lot 809 Deposited Plan 496148	Fee Simple Title	0.0418 Ha	729418
Lot 810 Deposited Plan 496148	Fee Simple Title	0.0405 Ha	729419
Lot 811 Deposited Plan 496148	Fee Simple Title	0.0337 Ha	729420
Lot 812 Deposited Plan 496148	Fee Simple Title	0.0350 Ha	729421
Lot 813 Deposited Plan 496148	Fee Simple Title	0.0350 Ha	729422
Lot 814 Deposited Plan 496148	Fee Simple Title	0.0350 Ha	729423
Lot 815 Deposited Plan 496148	Fee Simple Title	0.0345 Ha	729424
Lot 816 Deposited Plan 496148	Fee Simple Title	0.0345 Ha	729425
Lot 817 Deposited Plan 496148	Fee Simple Title	0.0404 Ha	729426
Lot 818 Deposited Plan 496148	Fee Simple Title	0.0604 Ha	729427
Lot 819 Deposited Plan 496148	Fee Simple Title	0.0428 Ha	729428
Lot 820 Deposited Plan 496148	Fee Simple Title	0.0483 Ha	729429
Lot 821 Deposited Plan 496148	Fee Simple Title	0.0491 Ha	729430
Lot 822 Deposited Plan 496148	Fee Simple Title	0.0462 Ha	729431



Title Plan - LT 496148

Created Parcels

Parcels	Parcel Intent	Area	CT Reference
Lot 823 Deposited Plan 496148	Fee Simple Title	0.0410 Ha	729432
Lot 824 Deposited Plan 496148	Fee Simple Title	0.0393 Ha	729433
Lot 825 Deposited Plan 496148	Fee Simple Title	0.0561 Ha	729434
Lot 826 Deposited Plan 496148	Fee Simple Title	0.0501 Ha	729435
Lot 827 Deposited Plan 496148	Fee Simple Title	0.0501 Ha	729436
Lot 828 Deposited Plan 496148	Fee Simple Title	0.0529 Ha	729437
Lot 829 Deposited Plan 496148	Fee Simple Title	0.0635 Ha	729438
Lot 830 Deposited Plan 496148	Fee Simple Title	0.0578 Ha	729439
Lot 857 Deposited Plan 496148	Fee Simple Title	0.0410 Ha	729440
Lot 858 Deposited Plan 496148	Fee Simple Title	0.0400 Ha	729441
Lot 859 Deposited Plan 496148	Fee Simple Title	0.0355 Ha	729442
Lot 860 Deposited Plan 496148	Fee Simple Title	0.0353 Ha	729443
Lot 861 Deposited Plan 496148	Fee Simple Title	0.0325 Ha	729444
Lot 862 Deposited Plan 496148	Fee Simple Title	0.0325 Ha	729445
Lot 863 Deposited Plan 496148	Fee Simple Title	0.0325 Ha	729446
Lot 867 Deposited Plan 496148	Fee Simple Title	0.0325 Ha	729447
Lot 868 Deposited Plan 496148	Fee Simple Title	0.0325 Ha	729448
Lot 869 Deposited Plan 496148	Fee Simple Title	0.0325 Ha	729449
Lot 870 Deposited Plan 496148	Fee Simple Title	0.0325 Ha	729450
Lot 871 Deposited Plan 496148	Fee Simple Title	0.0325 Ha	729451
Lot 872 Deposited Plan 496148	Fee Simple Title	0.0325 Ha	729452
Lot 875 Deposited Plan 496148	Fee Simple Title	0.0387 Ha	729453
Lot 876 Deposited Plan 496148	Fee Simple Title	0.0325 Ha	729454
Lot 877 Deposited Plan 496148	Fee Simple Title	0.0325 Ha	729455
Lot 878 Deposited Plan 496148	Fee Simple Title	0.0325 Ha	729456
Lot 879 Deposited Plan 496148	Fee Simple Title	0.0325 Ha	729457
Lot 880 Deposited Plan 496148	Fee Simple Title	0.0325 Ha	729458
Lot 881 Deposited Plan 496148	Fee Simple Title	0.0325 Ha	729459
Lot 882 Deposited Plan 496148	Fee Simple Title	0.0334 Ha	729460
Lot 883 Deposited Plan 496148	Fee Simple Title	0.0632 Ha	729461
Lot 887 Deposited Plan 496148	Fee Simple Title	0.0488 Ha	729462
Lot 888 Deposited Plan 496148	Fee Simple Title	0.0540 Ha	729463
Lot 889 Deposited Plan 496148	Fee Simple Title	0.0540 Ha	729464
Lot 890 Deposited Plan 496148	Fee Simple Title	0.0674 Ha	729465
Lot 891 Deposited Plan 496148	Fee Simple Title	4.7606 Ha	729466
Lot 892 Deposited Plan 496148	Fee Simple Title	1.8972 Ha	729467
Lot 992 Deposited Plan 496148	Fee Simple Title	7.3721 Ha	729468
Lot 993 Deposited Plan 496148	Fee Simple Title	0.0005 Ha	729469
Lot 1001 Deposited Plan 496148	Vesting on Deposit for Road	1.2454 Ha	
Lot 1004 Deposited Plan 496148	Vesting on Deposit for Road	0.1961 Ha	
Lot 1050 Deposited Plan 496148	Vesting on Deposit for Local Purpose Reserve	0.5351 Ha	729470

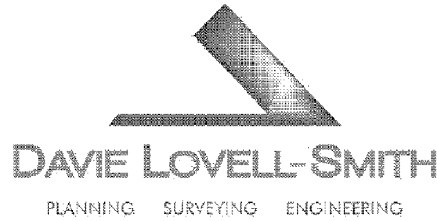


Title Plan - LT 496148

Created Parcels

Parcels	Parcel Intent	Area	CT Reference
Lot 1051 Deposited Plan 496148	Vesting on Deposit for Local Purpose Reserve	0.5576 Ha	729717
Area A Deposited Plan 496148	Easement		
Area B Deposited Plan 496148	Easement		
Area C Deposited Plan 496148	Easement		
Area D Deposited Plan 496148	Easement		
Area E Deposited Plan 496148	Easement		
Area F Deposited Plan 496148	Easement		
Area G Deposited Plan 496148	Easement		
Area H Deposited Plan 496148	Easement		
Area I Deposited Plan 496148	Easement		
Area J Deposited Plan 496148	Easement		
Area K Deposited Plan 496148	Easement		
Area L Deposited Plan 496148	Easement		
Area M Deposited Plan 496148	Easement		
Area N Deposited Plan 496148	Easement		
Area O Deposited Plan 496148	Easement		
Area P Deposited Plan 496148	Easement		
Total Area		18.9259 Ha	

Schedule / Memorandum



Davie, Lovell-Smith Ltd
116 Wrights Road,
PO Box 679,
Christchurch 8140,
New Zealand
Telephone (03) 379-0793,
E-mail: office@dls.co.nz

Our Ref: E18447

D.P.496148

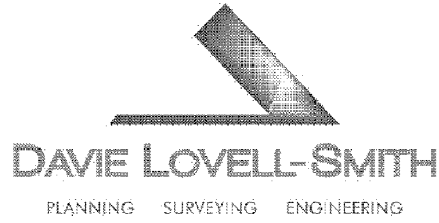
MEMORANDUM OF EASEMENTS

Purpose	Servient Tenement	Shown	Dominant Tenement
Right of way, rights to drain water & sewage and rights to convey water, gas, electricity telecommunications & computer media.	Lot 818 Lot 819 Lot 820 Lot 821 Lot 822 Lot 823 Lot 824 Lot 825	A B C D E F G H	Lots 819-825 Lots 818,820-825 Lots 818, 819 & 821-825 Lots 818-820 & 822-825 Lots 818-821 & 823-825 Lots 818-822, 824 & 825 Lots 818-823 & 825 Lots 818-824
Right to convey electricity telecommunications & computer media.	Lot 818 Lot 825 Lot 829	I J K	Lot 819 Lot 824 Lot 830
Right to convey telecommunications & computer media in gross.	Lot 818 Lot 819 Lot 820 Lot 821 Lot 822 Lot 823 Lot 824 Lot 825	A B C D E F G H	<u>Grantee</u> Enable Networks Ltd
Right to convey electricity in gross .	Lot 818 Lot 819 Lot 820 Lot 821 Lot 822 Lot 823 Lot 824 Lot 825	A B C D E F G H	Orion NZ Ltd

SCHEDULE OF EASEMENTS IN GROSS

Purpose	Servient Tenement	Shown	Grantee
Right to convey electricity in gross .	Lot 992	L	Orion NZ Ltd
Right to convey water in gross.	Lot 992	L, M & N	Christchurch City Council

Schedule / Memorandum



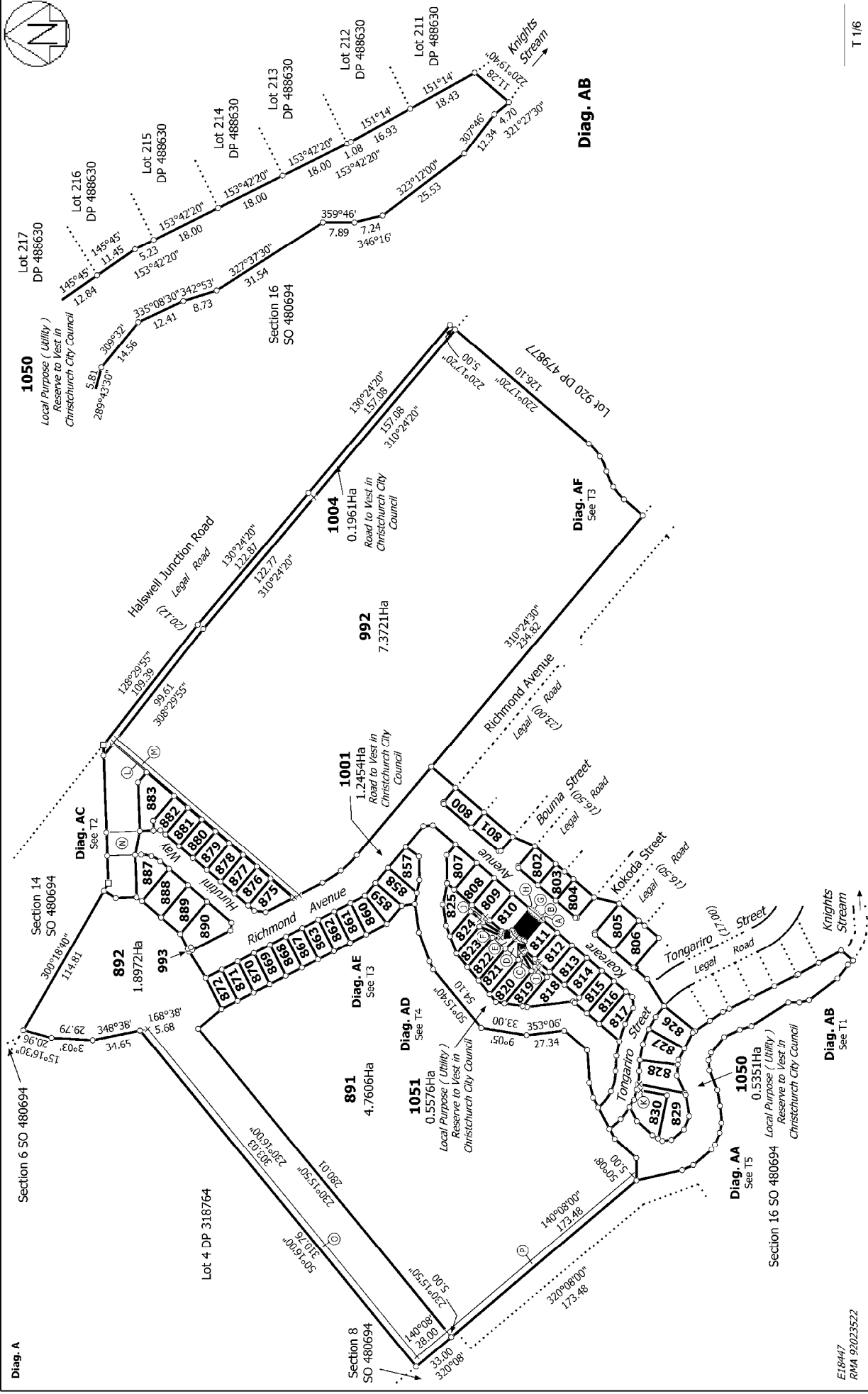
Davie, Lovell-Smith Ltd
116 Wrights Road,
PO Box 679,
Christchurch 8140,
New Zealand
Telephone (03) 379-0793,
E-mail: office@dls.co.nz

Our Ref: E18447

D.P.496148

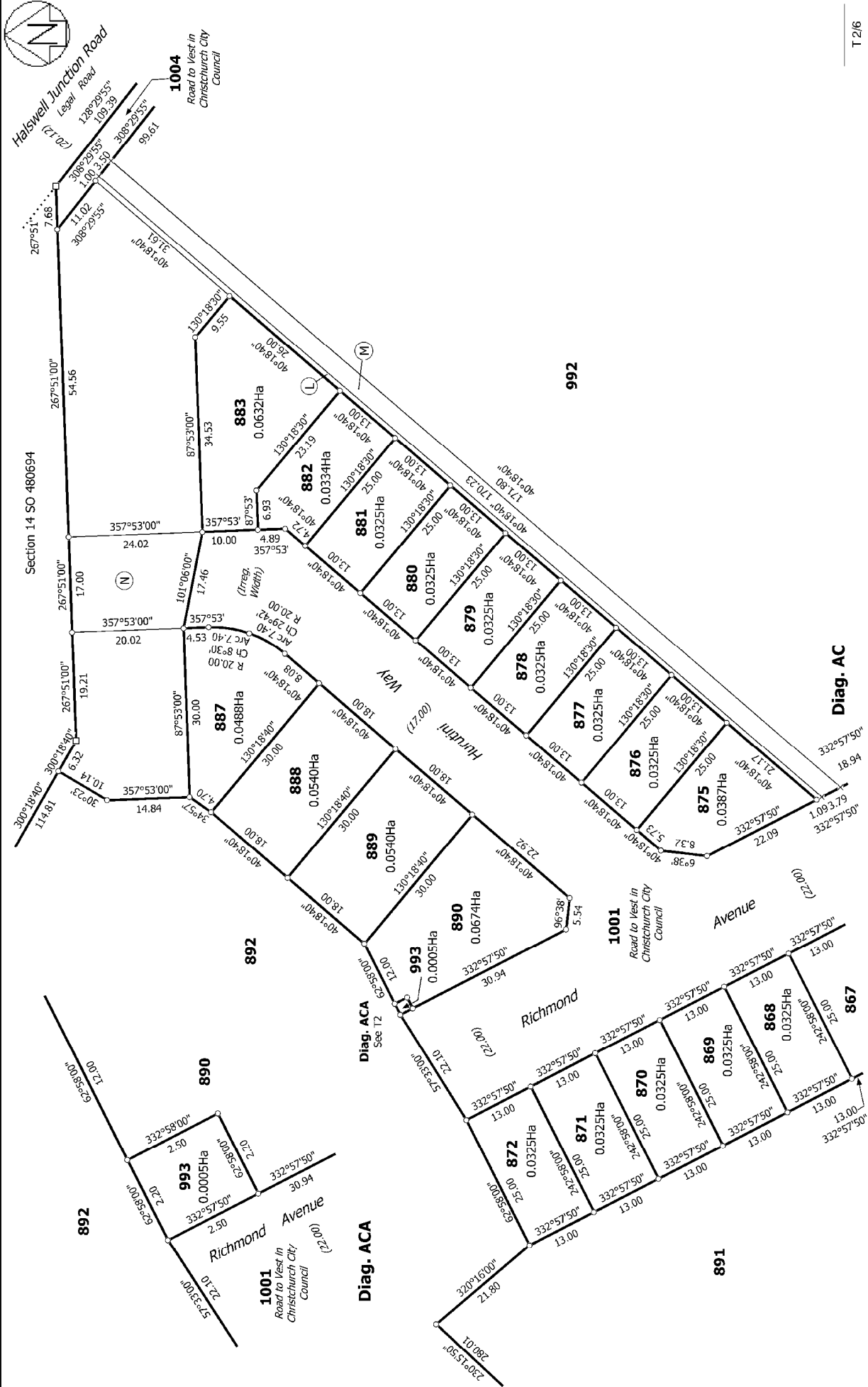
SCHEDULE OF EXISTING EASEMENTS

Purpose	Servient Tenement	Shown	Document
Right to convey water in gross.	Lot 891	P	T 989430.1
	Lot 892	O	



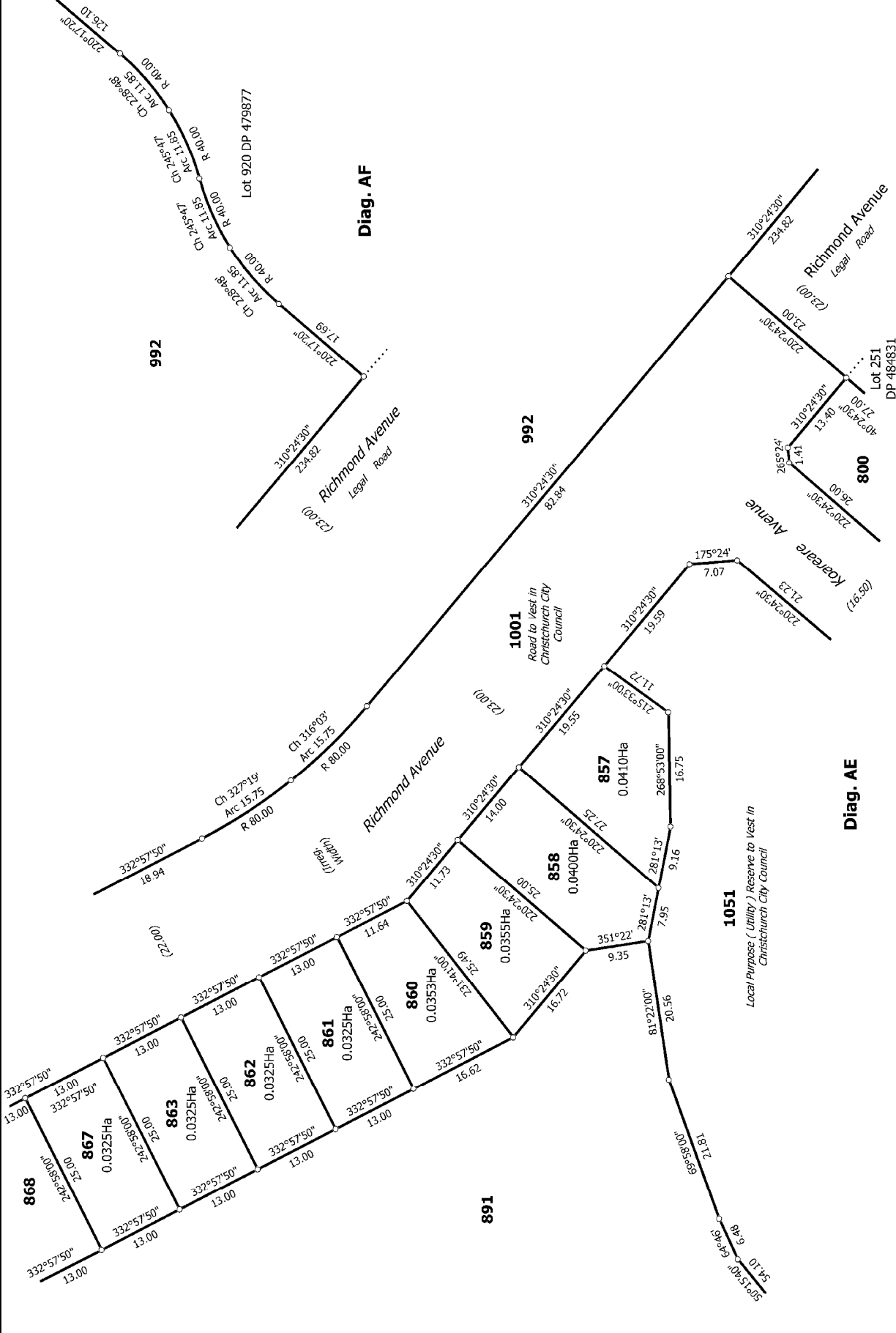
T 1/6

<p>Land District: Canterbury</p> <p>Digitally Generated Plan Generated on: 02/03/2016 11:57am Page 6 of 11</p>	<p>Title Plan LT 496148 DRAFT</p>	<p>Surveyor: Christopher David Hawes Firm: Davie Lovell-Smith Ltd</p>	<p>Lots 800-830, 857-863, 867-872, 875-883, 887-892, 992, 993, 1001, 1004, 1050 and 1051 being subdivision of Lot 1009 DP 488630</p>
--	--	---	---



T 2/6

<p>Land District: Canterbury</p> <p>Digitally Generated Plan</p> <p>Generated on: 02/03/2016 11:51am Page 7 of 11</p>	<p>Lots 800-830, 857-863, 867-872, 875-883, 887-892, 992, 993, 1001, 1004, 1050</p> <p>and 1051 being subdivision of Lot 1009 DP 488630</p>	<p>Surveyor: Christopher David Hawes</p> <p>Firm: Davie Lovell-Smith Ltd</p>
<p>Title Plan</p> <p>LT 496148</p> <p>DRAFT</p>		



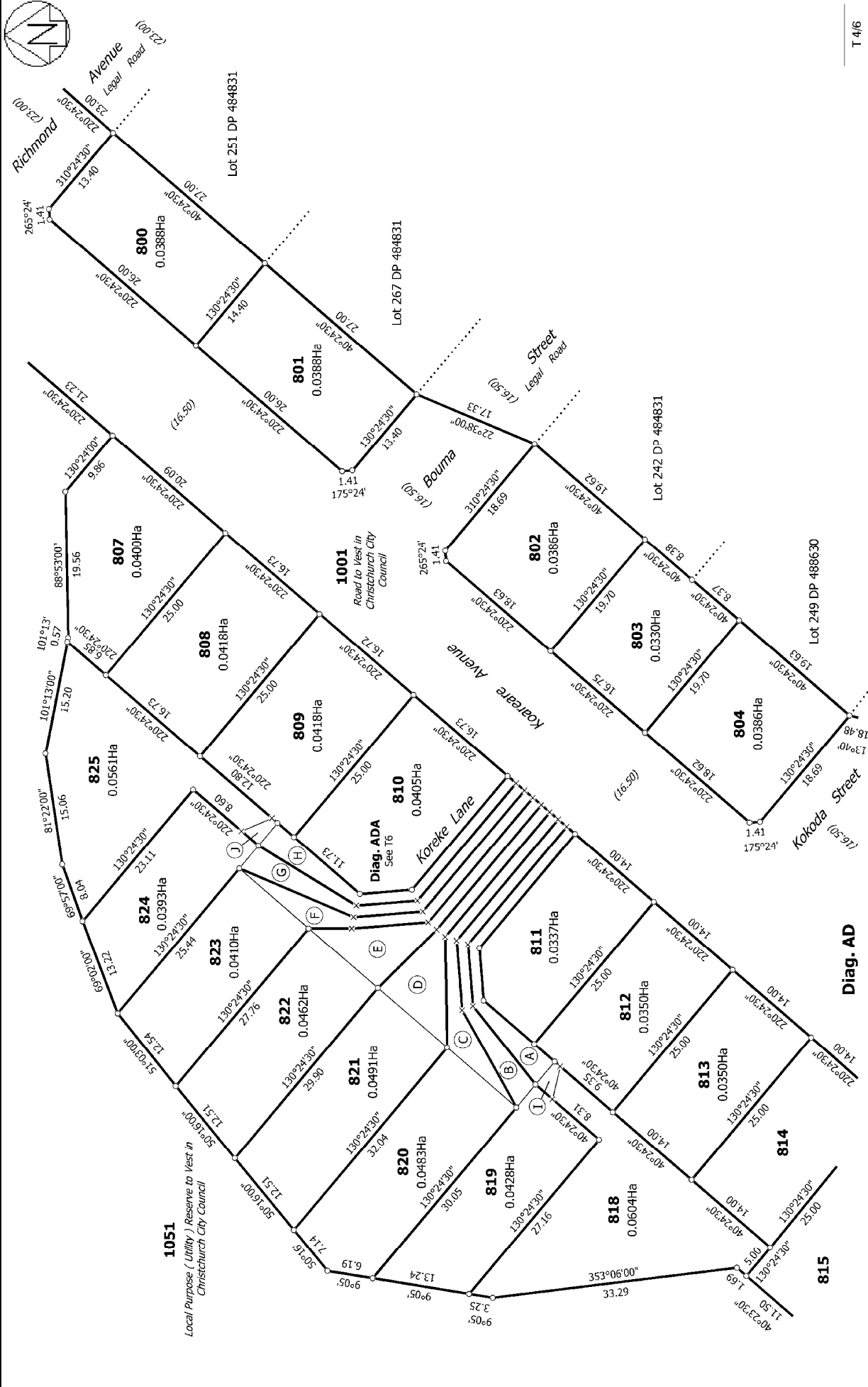
T 3/6

Land District: Canterbury
Digitally Generated Plan
 Generated on: 02/03/2016 11:57am Page 8 of 11

Lots 800-830, 857-883, 887-892, 992, 1001, 1004, 1050
 and 1051 being subdivision of Lot 1009 DP 488630

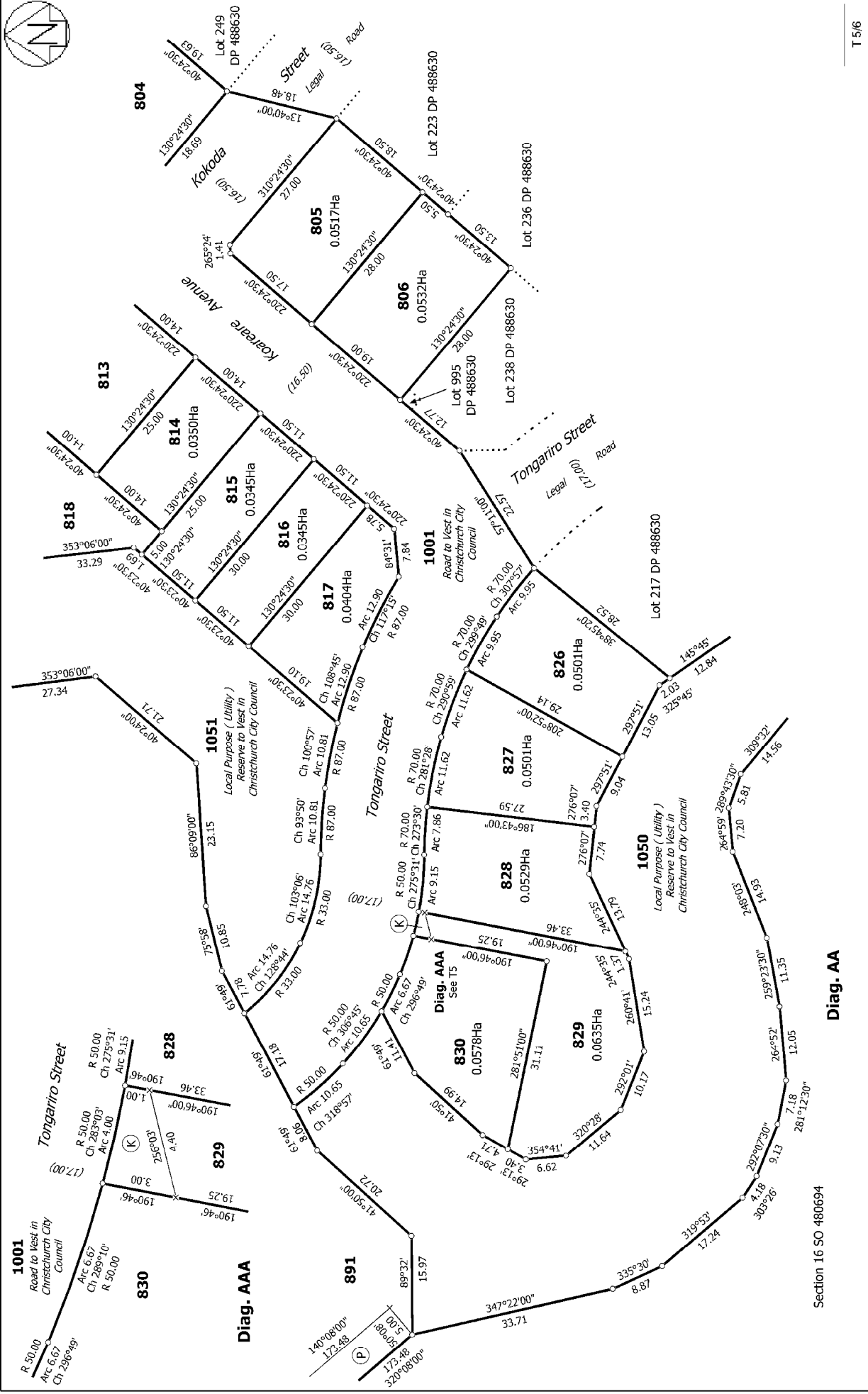
Surveyor: Christopher David Hawes
 Firm: Davie Lovell-Smith Ltd

Title Plan
 LT 496148
DRAFT



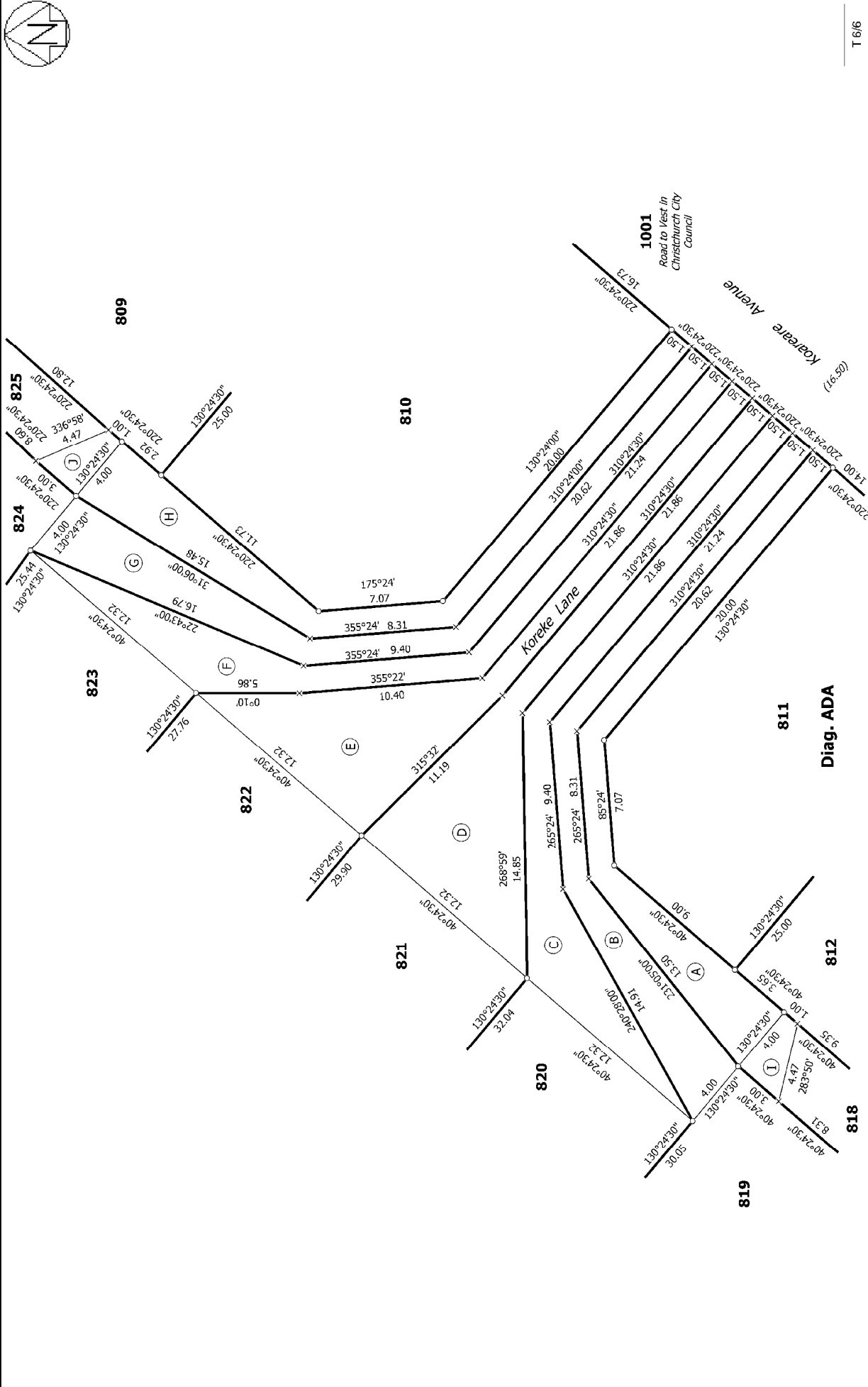
T 4/6

Land District: Canterbury	Surveyor: Christopher David Hawes Firm: Davis Lovell-Smith Ltd	Title Plan LT 496148 DRAFT
Lots 800-830, 857-863, 867-872, 875-883, 887-892, 992, 993, 1001, 1004, 1050 and 1051 being subdivision of Lot 1009 DP 488630		
Digitally Generated Plan Generated on: 02/03/2016 11:57am Page 9 of 11		



T 5/6

<p>Land District: Canterbury</p>	<p>Surveyor: Christopher David Hawes Firm: Davis Lovell-Smith Ltd</p>	<p>Lots 800-830, 857-863, 867-872, 875-883, 887-892, 992, 993, 1001, 1004, 1050 and 1051 being subdivision of Lot 1009 DP 488630</p>	<p>Title Plan LT 496148 DRAFT</p>
<p>Digitally Generated Plan Generated on: 02/03/2016 11:57am Page 10 of 11</p>		<p>Section 16 SO 480694</p>	



T 6/6

<p>Land District: Canterbury</p> <p>Digitally Generated Plan</p> <p>Generated on: 02/03/2016 11:51am Page 11 of 11</p>	<p>Lots 800-830, 857-863, 867-872, 875-883, 887-892, 992, 993, 1001, 1004, 1050 and 1051 being subdivision of Lot 1009 DP 488630</p>	<p>Surveyor: Christopher David Hawes</p> <p>Firm: Davie Lovell-Smith Ltd</p>	<p>Title Plan LT 496148 DRAFT</p>
---	--	--	---